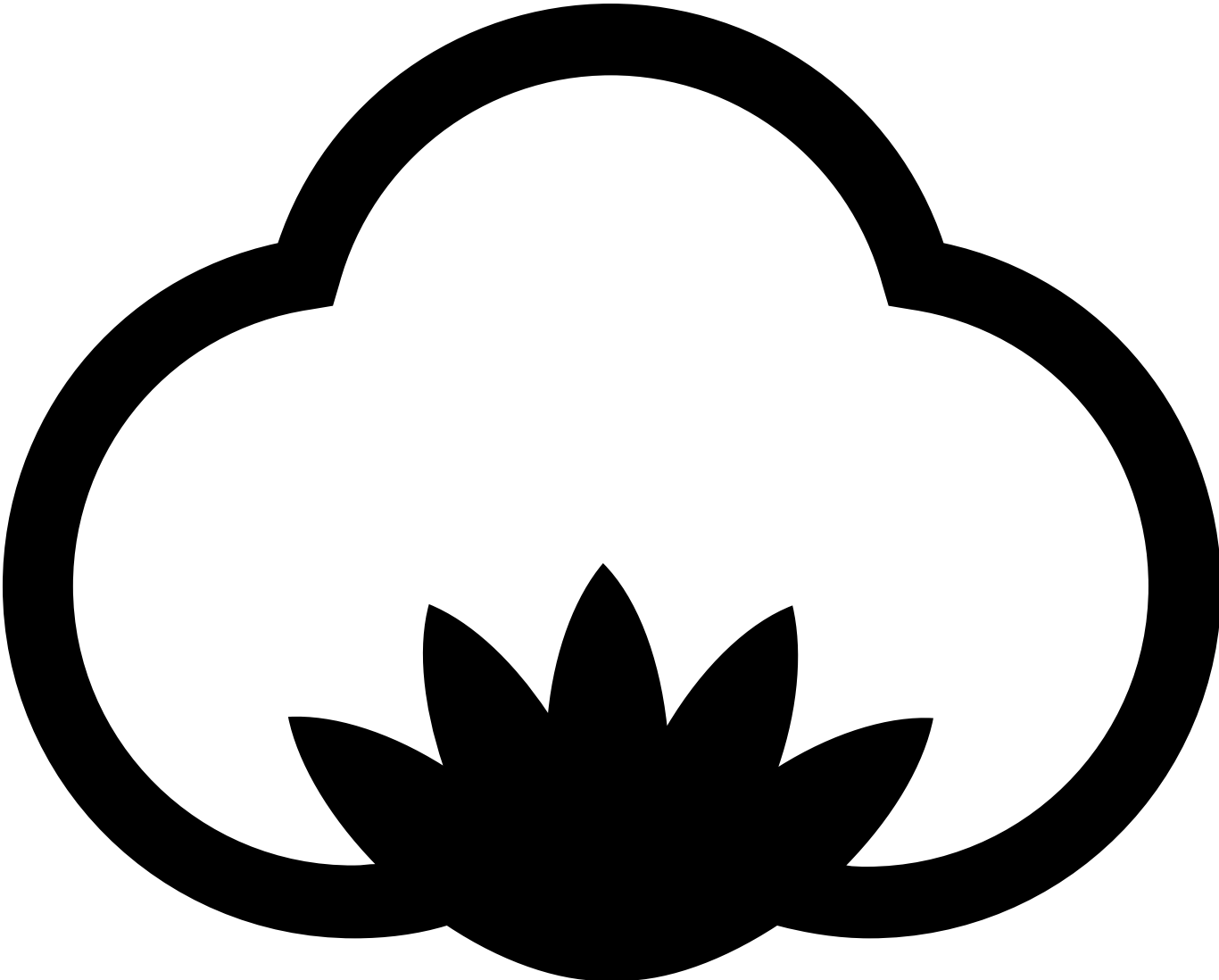


ST305 Uni Fashion

165 g/m², Single jersey

Organic



ORGANIC



- Quality: 100% combed and enzyme washed cotton
- Oxford Grey: 85% combed cotton, 15% viscose
- Heather Black: 80% combed cotton, 20% polyester
- Anthracite: 60 % combed cotton, 40% polyester
- Weight: 165 g/m²
- Single jersey
- Box: 50 pcs., pack: 10 pcs.

The product is LABELFREE and contains only a small size label in the left side of the neck.

The ST305 Uni Fashion is a classic t-shirt with a slightly fitted cut and side seam. The sleeve is tailored to fit this cut.

Sleeves and bottom are hemmed with 3 threaded flatlock. 3 threaded flatlock make a decorative detail to the T-shirt. It has 3 straight stitches with zig-zag stitches between on the right side of the T-

shirt, it makes the hem more visible than with a normal twin-needle stitching.

The neckline is finished with a 1x1 cotton rib and stitched with a twin needle topstitch.

The t-shirt is made from one of our most popular cotton fabrics, single jersey 165 g / m². We use this material for most of our t-shirts. The material is known for the following qualities: soft, flexible, hardwearing, suitable for many washings, good color fastness, minimal shrinkage, smooth and uniform surface.

The t-shirt has neck tape and only a small size label in the left side of the neck. In the left side seam, there is a small label with the product name and washing instructions.

Colors



Black
Black



Heather
Black
PMS 432 C



White
White



Anthracite
PMS 426 C



Oxford Grey
PMS Cool
Grey 7 C



Sky Blue
PMS 657 C



Turquoise
PMS 641 C



Swedish
Blue
PMS 300 C



New Royal
PMS 287 C



Blue Navy
PMS 533 C



Petroleum
PMS 7477
C



Spring
Green
PMS 347 C



Bottle Green
PMS 553 C



New Army
PMS 7763
C



Orange
PMS 1505
C



Red
PMS 187 C



Burgundy
PMS 222 C



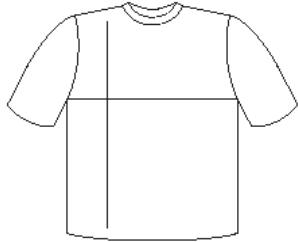
Dark Navy
PMS 296 C



Violet
PMS 2695
C



Sand
PMS 7502
C



cm	S	M	L	XL	XXL	3XL
½ Width	48	50	54	58	62	66
Length	73	75	77	79	81	83

